



**Isle of Wight**  
DISTRIBUTION



**Delivering across the  
Isle of Wight, UK and Beyond**

**T:** 02381 535 101 | **W:** [www.isleofwightdistribution.co.uk](http://www.isleofwightdistribution.co.uk)



## ABOUT US

# Part of the **number one network** for quality

Are you looking for an efficient, flexible UK and international shipping and road haulage company which offers same day freight services, overnight pallet distribution and general road haulage deliveries?

Based in Chandler's Ford and on the Isle of Wight we offer next-day pallet deliveries across Hampshire as well as national and international freight solutions.

As a proud shareholder member of Pall-Ex and Road Haulage Association, IOW Distribution prides itself on delivering a quality distribution and storage service.

Pall-Ex provides award-winning, leading palletised freight distribution services throughout the UK, Europe and beyond.

Founded in 1996, our UK network has grown phenomenally, providing customers with reliable, innovative and cost-effective services, all delivered by a nationwide membership of the UK's leading hauliers.

Pall-Ex continually develops a comprehensive range of integrated services which proactively respond to the challenges and opportunities encountered by our customers.



Proud shareholder member of  
**PALLEX**

IOW offers a quality and flexible road haulage, pallet collection, pallet delivery and warehouse storage options. All are designed to make delivering your goods as hassle-free and cost-effective as possible.

## OUR SERVICES:

- ▶ Cost-effective rates for quarter, half and full UK and Euro pallets
- ▶ Next day, economy and timed delivery options available
- ▶ Competitive multi-pallet rates
- ▶ Full trailer load (FTL) and part trailer load (PTL) services
- ▶ Tail-lift deliveries
- ▶ Fulfilment
- ▶ International deliveries
- ▶ Warehousing
- ▶ File mile delivery to and from the Isle of Wight
- ▶ Real-time track-and-trace and live proof of delivery (POD)

“For over two years, Isle of Wight Distribution has never failed to exceed our business needs. They have helped our business grow with helpful and hands-on staff available at all times and with service standards that are better than other nationwide delivery companies. They are the most reliable and professional delivery company I have ever had the pleasure to deal with.

“They simply enhance our business offering.”

Pawel Pawlik  
**TRANSPORT & PURCHASING MANAGER**  
**FIS PRODUCTS**



**Full, half,  
quarter pallets**



**Tailored  
distribution  
solutions**



**Warehousing**

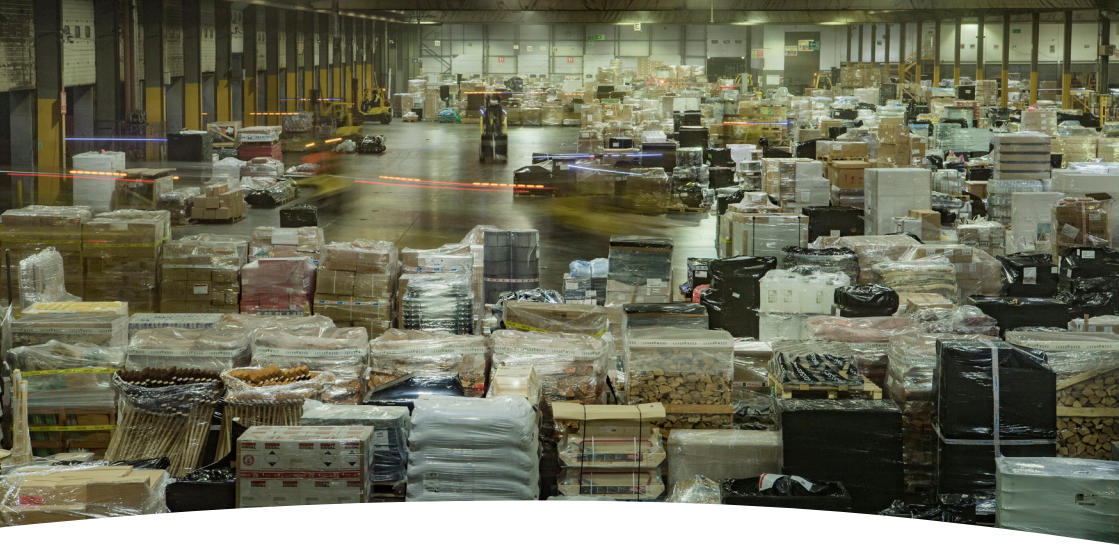


**Flexible  
timed  
deliveries**

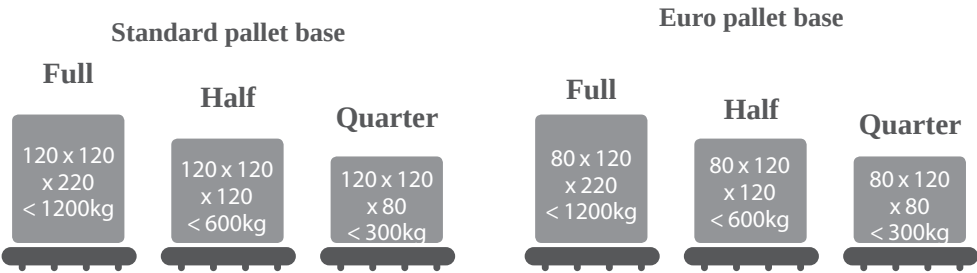


**International  
deliveries**

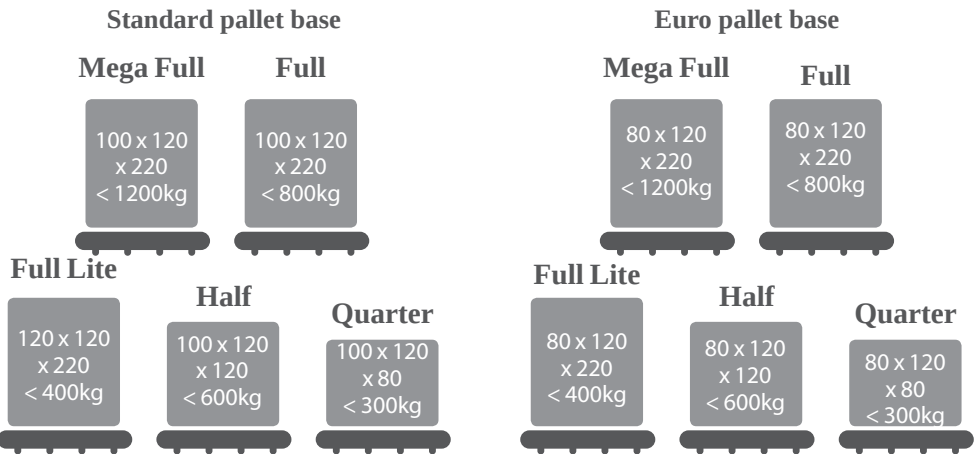




# DOMESTIC UK - PALLET DIMENSIONS



# INTERNATIONAL - PALLET DIMENSIONS



## IT TECHNOLOGY

# Introducing the **latest technology**

Next generation technology solutions to benefit your business.

Our one-stop logistics management solution fuels the Pall-Ex network enabling the highest levels of efficient service and visibility to our members and customers.

Whether your consignment is destined for the UK, Europe, or beyond; our service to you is underpinned by powerful and innovative systems which mean you can manage your pallet distribution more effectively.

### International service

At the heart of our pan-European network sits our core operational system - Nexus.

This web-based system provides a broad range of powerful functionality, enabling the user to effortlessly manage consignments in real-time from any PC with an internet connection. It is an extremely advanced, capable and powerful one-stop I.T. solution for logistics management.

### NexusGo

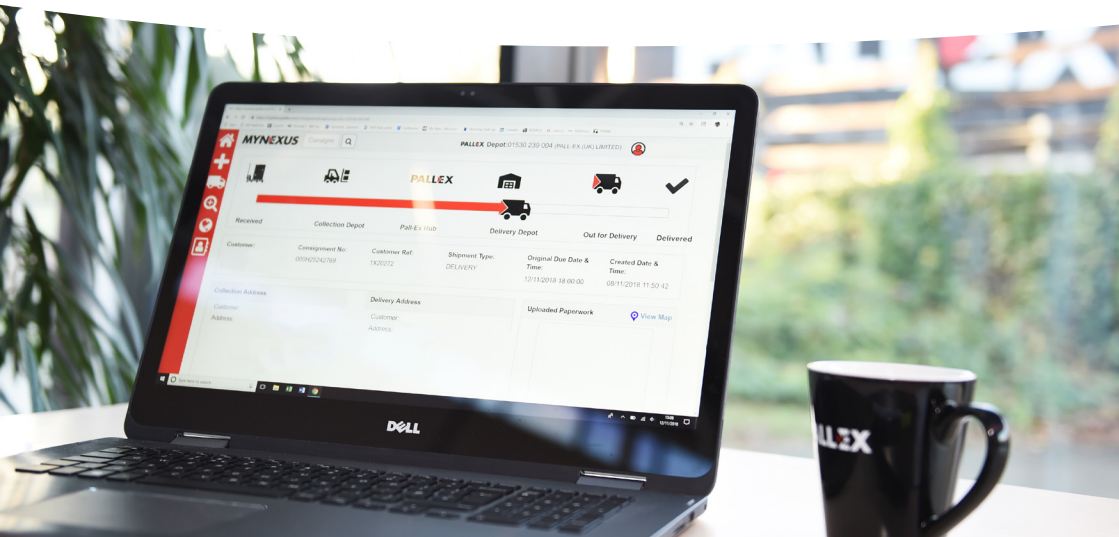
This android app provides Pall-Ex members a highly flexible proof of delivery (POD) reporting solution. Every Pall-Ex member has the ability to scan consignments both inbound and outbound of their depot using NexusGo. Throughout the process, the consignments are scanned and details made available to you in real time.

### MyNexus

The next generation of Pall-Ex's systems, MyNexus offers a range of advanced tools to improve the overall experience of booking, reviewing and tracking shipments.

### Key features of MyNexus

- ▶ Live dashboard
- ▶ Advanced tracking
- ▶ Enhanced customer experience
- ▶ Built-in address book





"I am very pleased with MyNexus. For us it means more transparency, a higher level of customer service and makes it easier for us to organise our day to day activities."

Dayana Mileva  
**LUXURY WOOD**

## MYNEXUS

### Delivering results

Pall-Ex's proactive information technology services deliver major benefits and advantages to ourself and customers.

Pall-Ex continuously innovates in order to anticipate and exceed our customers' expectations; delivering technological solutions which support our complete range of service-users.



"MyNexus technology makes it much easier to track deliveries and quickly check the status of our consignments on a daily basis. MyNexus helps ease our communication between the depot, drivers and our customer services team"

Suzanne Jordan  
**SIMPLY PAVING LTD**





## CONTACT US

Based in Chandler's Ford and on the Isle of Wight we offer next-day pallet deliveries across Hampshire as well as national and international freight solutions.

### **Location one:**

Unit C Eagle Close,  
Eagle Way,  
Chandlers Ford, Eastleigh,  
SO53 4NF

### **Location two:**

Unit 2 New Barn Industrial  
Park, Newport Road,  
Merstone, Isle of Wight,  
PO30 3BT

**T:** 02381 535 101

**E:** [sales@isleofwightdistribution.co.uk](mailto:sales@isleofwightdistribution.co.uk)

**W:** [www.isleofwightdistribution.co.uk](http://www.isleofwightdistribution.co.uk)



Proud shareholder member of

**PALLEX**